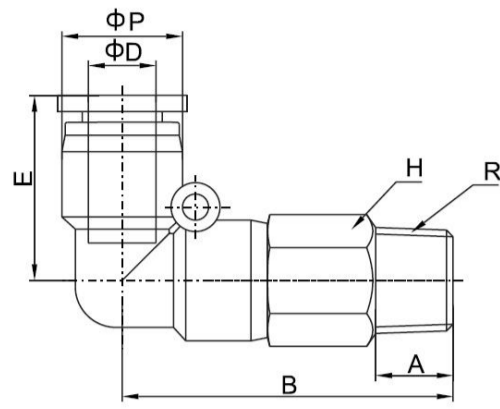


## PLL Extended Male Elbow



Body: PBT (Polybutylene Terephthalate)  
 Thread: Nickel Plated Brass  
 Sleeve: POM (Polyoxymethylene Pastic)  
 Color of Sleeve: Blue, Red, Black, Gray  
 Fluid Admitted: Air, Vacuum, Water\*  
 Working Pressure: 0—1.0MPa | 0—150psi  
 Proof Pressure: 3.0Mpa | 435psi  
 Negative Pressure: -100Kpa | -29.5 In Hg  
 Working Temperature: 0~60°C | 32~140°F  
 Lock Claw: Stainless Steel  
 Seal, O-ring: NBR  
 Applicable Tube: PU/PA/PE/PVC  
 \* Note) Applicable for general industrial water.

PART NO.	D(mm)	R	E(mm)	A(mm)	P(mm)	B(mm)	H(mm)
PLL 04-M5	4	M5	18	4	11	32	10
PLL 04-M6	4	M6	18	4.1	11	32	10
PLL 04-01	4	R1/8	18	7	11	34	10
PLL 04-02	4	R1/4	18	9.5	11	37	14
PLL 06-M5	6	M5	19	4	13.4	34.5	12
PLL 06-M6	6	M6	19	4.1	13.4	34.5	12
PLL 06-01	6	R1/8	19	7	13.4	37.5	12
PLL 06-02	6	R1/4	19	9.5	13.4	40	14
PLL 06-03	6	R3/8	19	10	13.4	41.5	17
PLL 06-04	6	R1/2	19	13	13.4	45	21
PLL 08-01	8	R1/8	23	7	15	42.5	14
PLL 08-02	8	R1/4	23	9.5	15	44.5	14
PLL 08-03	8	R3/8	23	10	15	46.5	17
PLL 08-04	8	R1/2	23	13	15	50	21
PLL 10-01	10	R1/8	27.5	7	18.8	52	17
PLL 10-02	10	R1/4	27.5	9.5	18.8	54	17
PLL 10-03	10	R3/8	27.5	10	18.8	55	17
PLL 10-04	10	R1/2	27.5	13	18.8	58.5	21
PLL 12-01	12	R1/8	29.5	7	21	59	20
PLL 12-02	12	R1/4	29.5	9.5	21	59.5	20
PLL 12-03	12	R3/8	29.5	10	21	60.5	20
PLL 12-04	12	R1/2	29.5	13	21	64	21
PLL 14-02	14	R1/4	31.5	9.5	26	72	24
PLL 14-03	14	R3/8	31.5	10	26	74	24
PLL 14-04	14	R1/2	31.5	13	26	78	24
PLL 15-02	15	R1/4	31.5	9.5	26	72	24
PLL 15-03	15	R3/8	31.5	10	26	74	24
PLL 15-04	15	R1/2	31.5	13	26	78	24
PLL 16-02	16	R1/4	31.5	9.5	26	72	24
PLL 16-03	16	R3/8	31.5	10	26	74	24
PLL 16-04	16	R1/2	31.5	13	26	78	24
PLL 5/32-01	5/32	R1/8	18	7	11	34	10
PLL 5/32-02	5/32	R1/4	18	9.5	11	37	14
PLL 1/4-01	1/4	R1/8	19	7	13.4	37.5	12
PLL 1/4-02	1/4	R1/4	19	9.5	13.4	40	14
PLL 1/4-03	1/4	R3/8	19	10	13.4	41.5	17
PLL 1/4-04	1/4	R1/2	19	13	13.4	45	21
PLL 5/16-01	5/16	R1/8	23	7	15	42.5	14
PLL 5/16-02	5/16	R1/4	23	9.5	15	44.5	14
PLL 5/16-03	5/16	R3/8	23	10	15	46.5	17
PLL 5/16-04	5/16	R1/2	23	13	15	50	21
PLL 3/8-01	3/8	R1/8	27.5	7	18.8	52	17
PLL 3/8-02	3/8	R1/4	27.5	9.5	18.8	54	17
PLL 3/8-03	3/8	R3/8	27.5	10	18.8	55	17
PLL 3/8-04	3/8	R1/2	27.5	13	18.8	58.5	21
PLL 1/2-01	1/2	R1/8	29.5	7	21	59	20
PLL 1/2-02	1/2	R1/4	29.5	9.5	21	59.5	20
PLL 1/2-03	1/2	R3/8	29.5	10	21	60.5	20
PLL 1/2-04	1/2	R1/2	29.5	13	21	64	21

\* Information Contained Herein May Be Changed Without Prior Notification.